

INDUSTRIAL PRODUCT DATASHEET

Hightorque HTDW-4438-30 1:30 Gear Motor CAN

A highly-integrated, daisy-chainable 1:30 gear motor with dual encoder for multi-turn absolute positioning, suitable for 24V battery-powered robotics.

SKU

114090071

UPDATED

2026-06-10 12:11:53

PRICE

\$189.00(Excl. VAT)



Overview

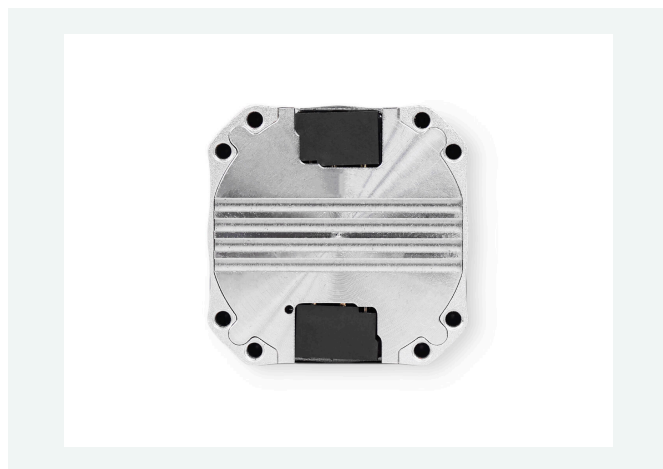


The Hightorque HTDW-4438-30 1:30 Gear Motor CAN integrates a frameless torque motor, absolute encoder, driver, and planetary reducer into a single unit. With dual XT30 connectors, it supports daisy-chaining and is ideal for robot arm and biped humanoid applications.

Key Features

- **Highly-integrated** Includes frameless torque motor, absolute encoder, driver circuitry and planetary reducer
- **Simple connection** Has two XT30(2+2) connectors suitable for daisy-chain connection without special cable modifications
- **Dual Encoder** Enables multi-turn absolute position recognition
- **Battery power compatible** Could be used in 24V battery-powered system
- **Daisy-chain capable** Can connect multiple Hightorque motors in series using XT30 cables for robotics applications

Product Gallery



Specification

Product	Hightorque HTDW-4438-30 Motor
Rated Voltage	24V
Operating Temperature	-20°C~40°C

Applications

- Robot Arm
- Biped Humanoid

Part List

Hightorque HTDW-4438-30 Motor	x1
XT30(2+2) Cable	x1

Compliance & Logistics

HSCODE	8501109990
USHSCODE	8501106080
UPC	
EUHSCODE	8501109390
COO	CHINA

Resource Links

- <https://www.seeedstudio.com/Hightorque-HTDW-4438-30-NE-Gear-Motor-p-6482.html>
- [Datasheet](#)
- [User Manual](#)
- [SDK\(CAN\)](#)
- [CANProtocol](#)

Seeed Technology Co.,Ltd.
9F, Building G3, International E City,
Zhongshanyuan Road, Nanshan, Shenzhen, China

Tel: +86 0755-80695676
Web: www.seeed.cc
Shop: www.seeedstudio.com