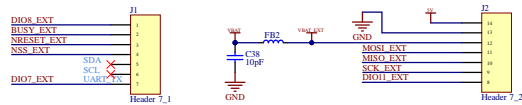
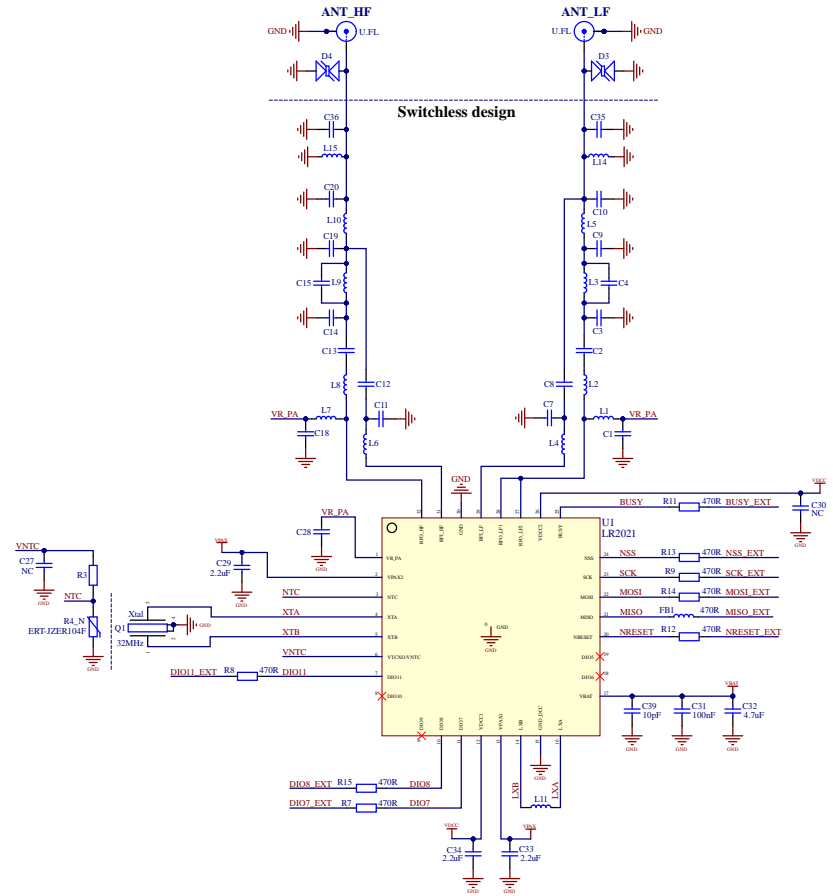


# Wio-LR202x Module @ 490MHz and 2.4GHz - Switchless design with castellation:

Xiao Wio-LR202x pinout



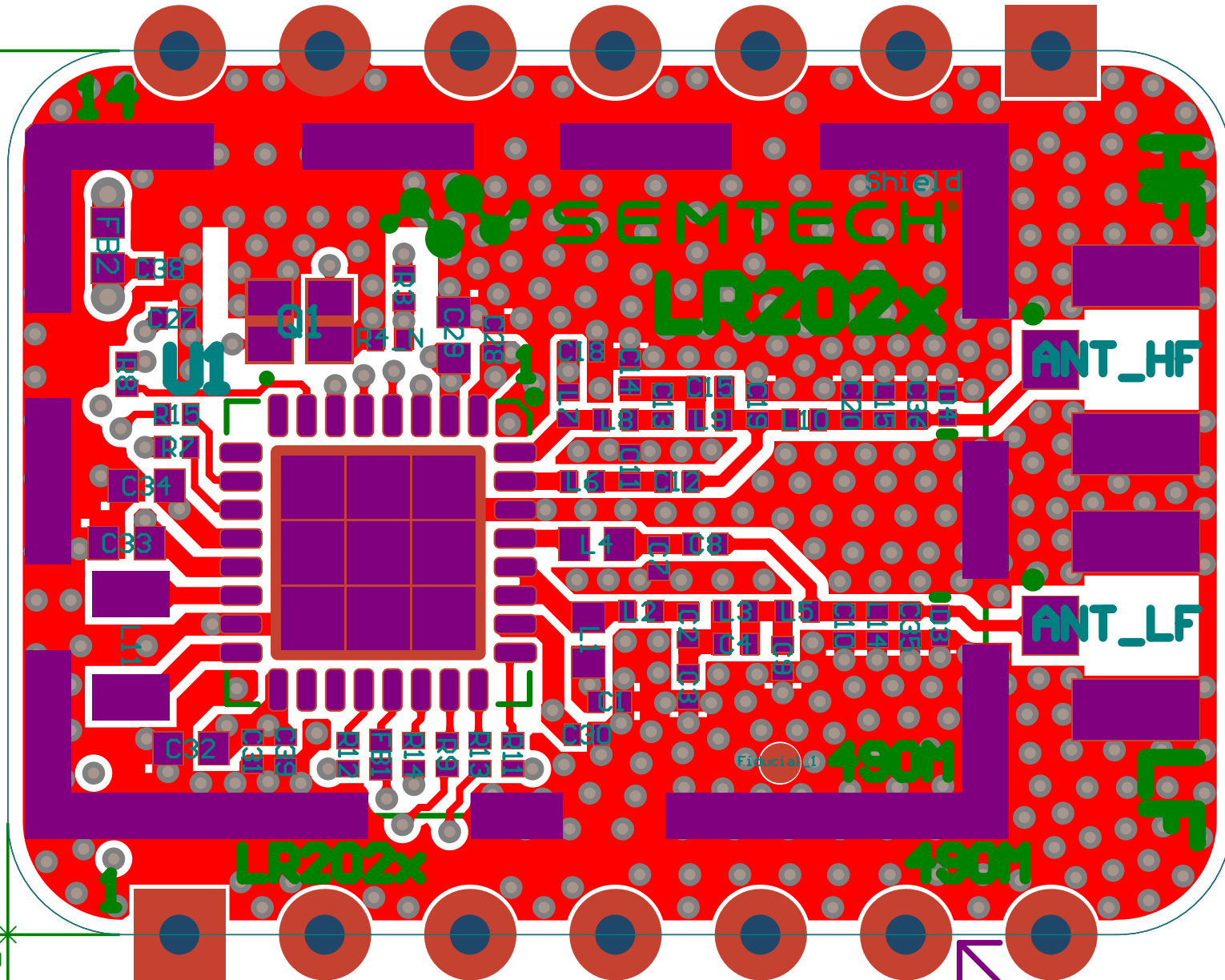
ANT\_HF 2.4GHz      ANT\_LF SubGHz - 490MHz



7x Castellated Pads

15.46mm

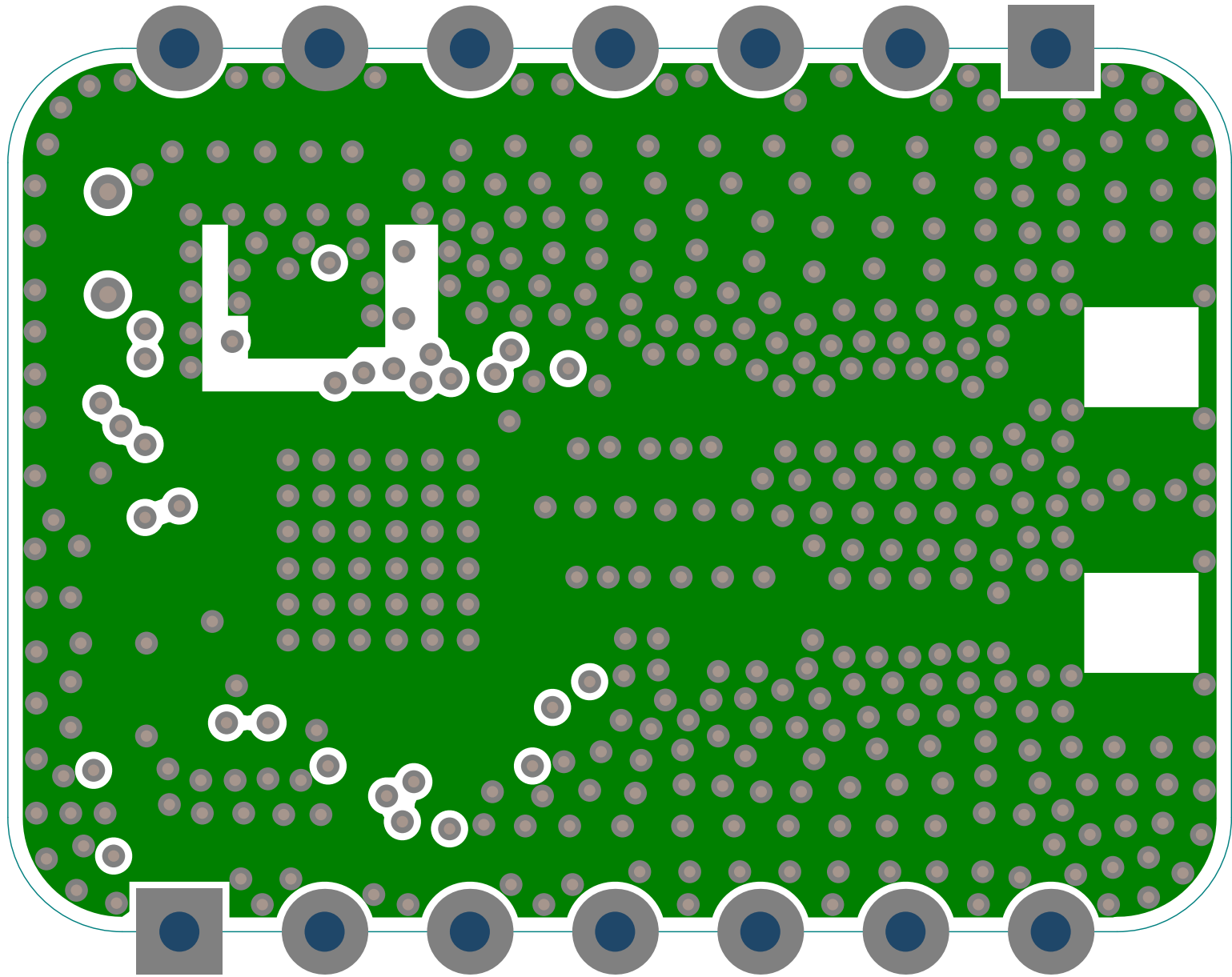
Origin(0;0)

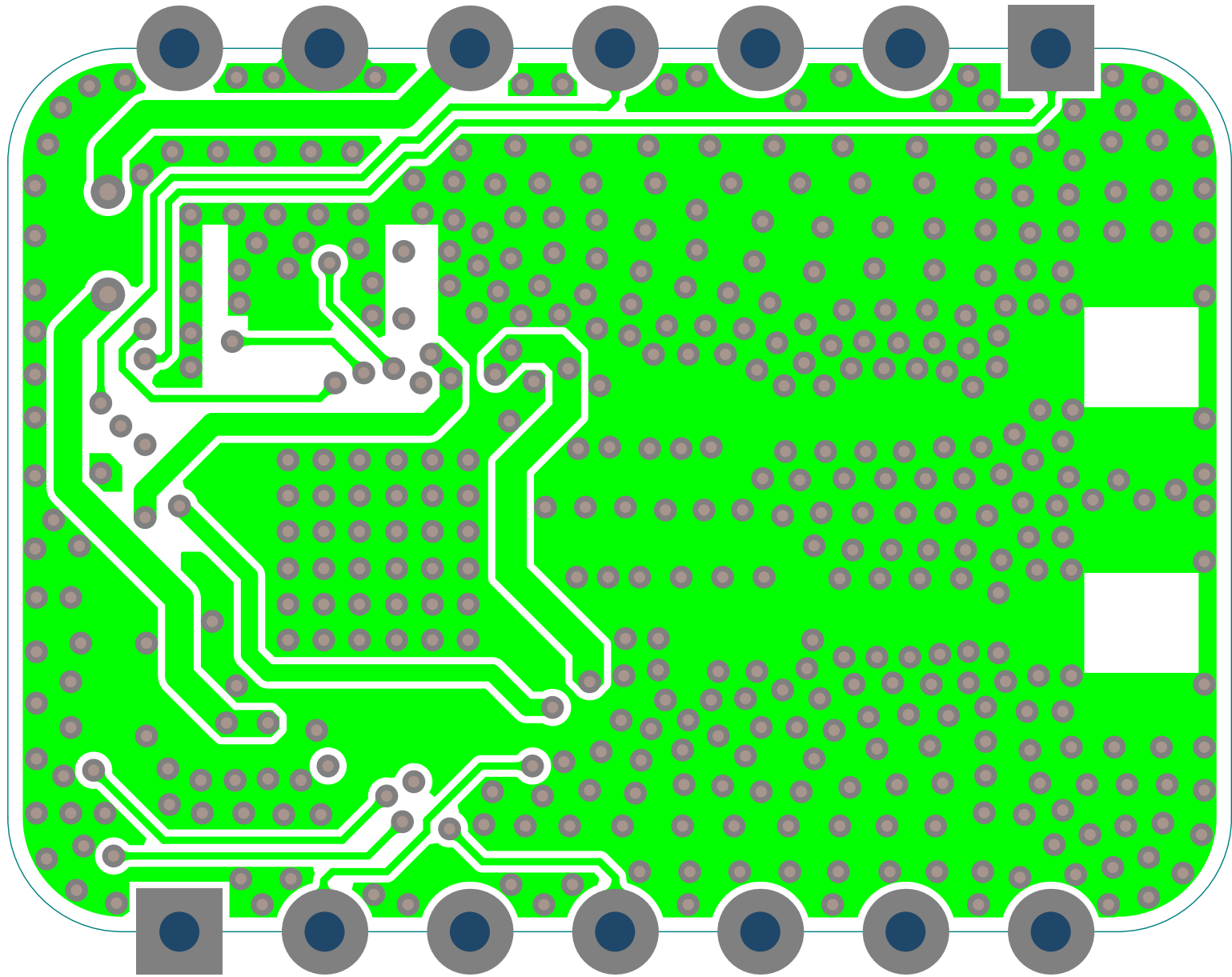


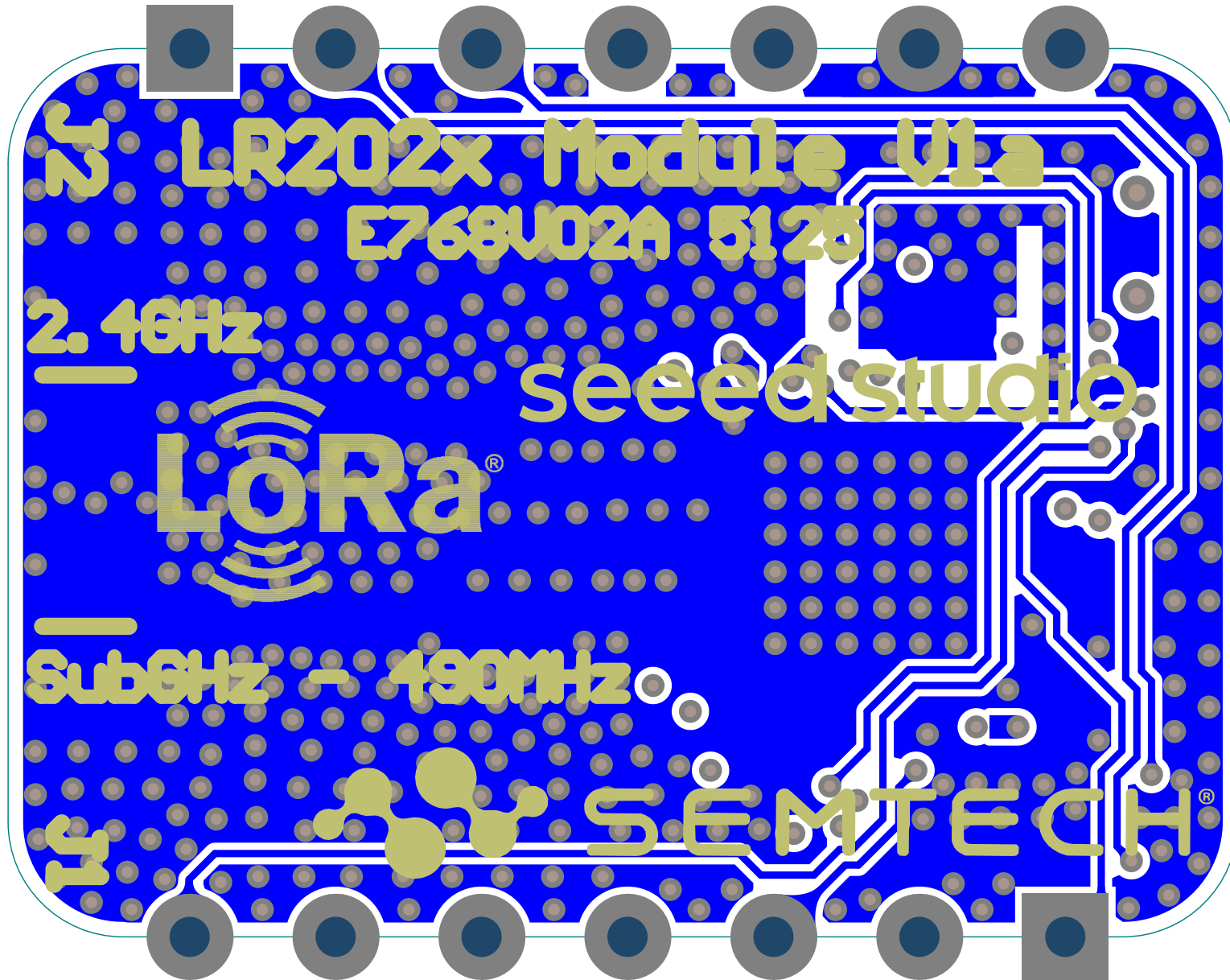
7x Castellated Pads

Routed Edge for Castellation

21.40mm







LR202x Module V1a

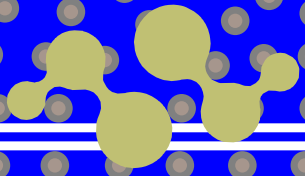
E768U02A 5125

2.4GHz

seeedstudio



SubGHz - 490MHz



SEMTECH®