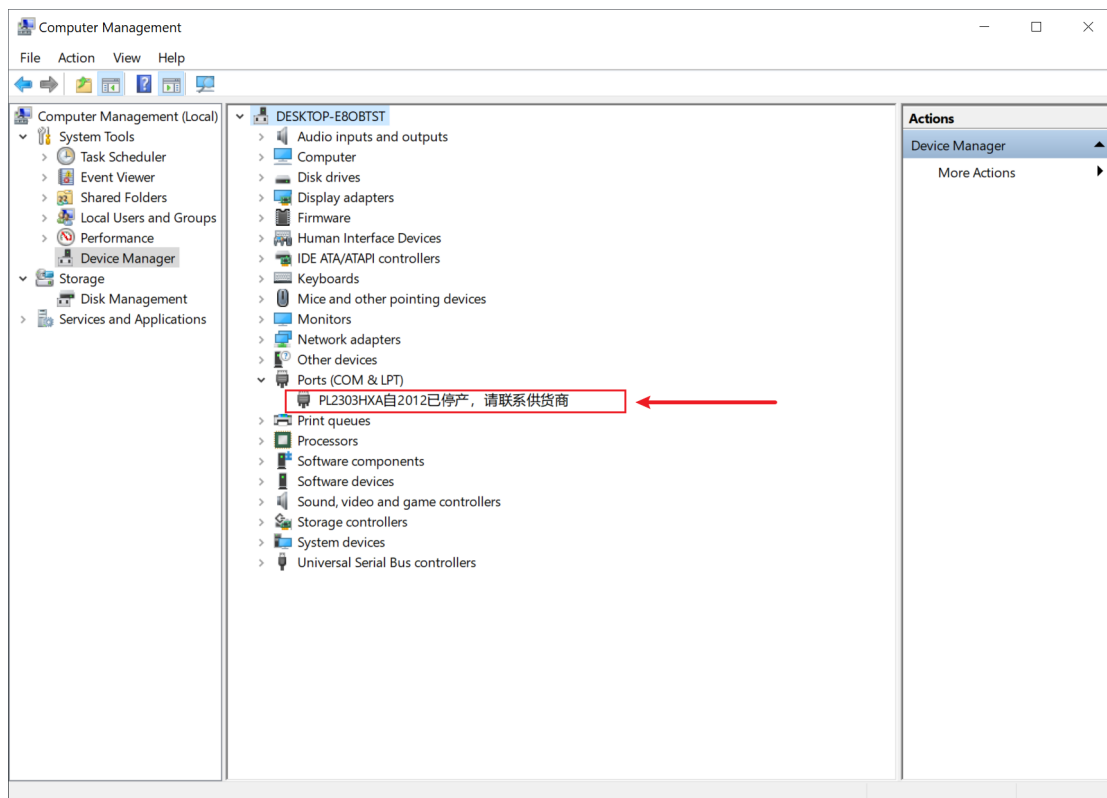
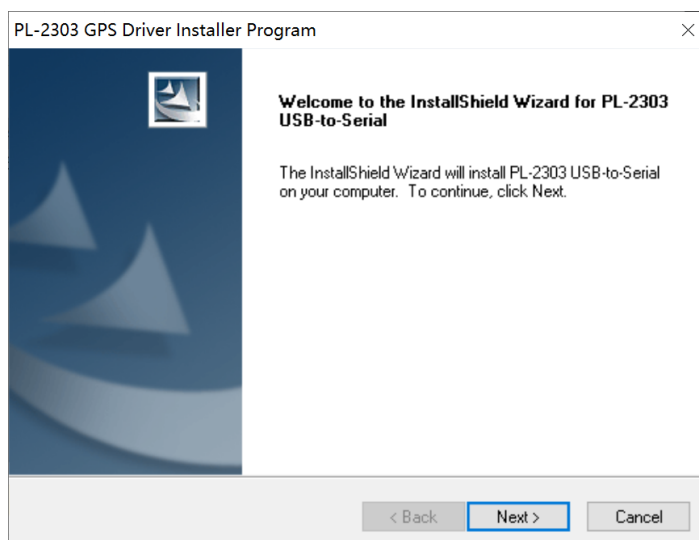


1. Connect the USB to TTL wire to PC.
The Ports will display as follow:

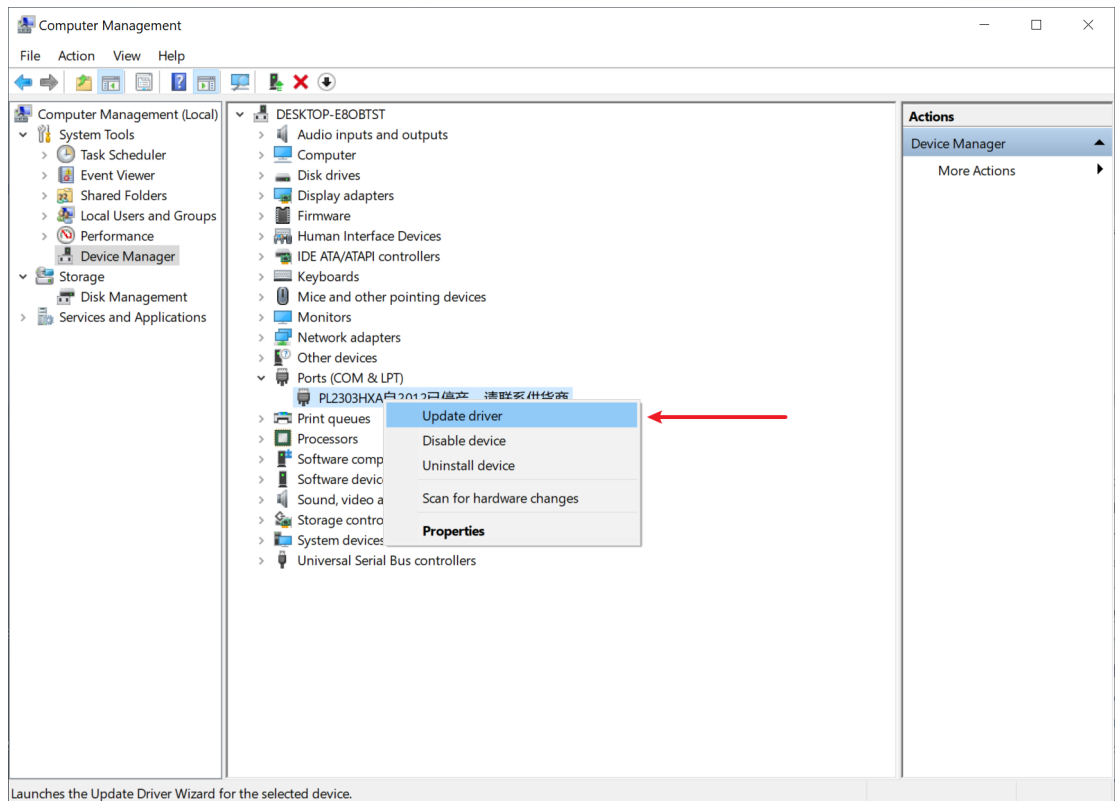


2. Install the driver.
 - a) Download from
https://raw.githubusercontent.com/Jenkinlu001/PL2303-Driver/main/PL2303_Prolific_GPS_1013_20090319.zip

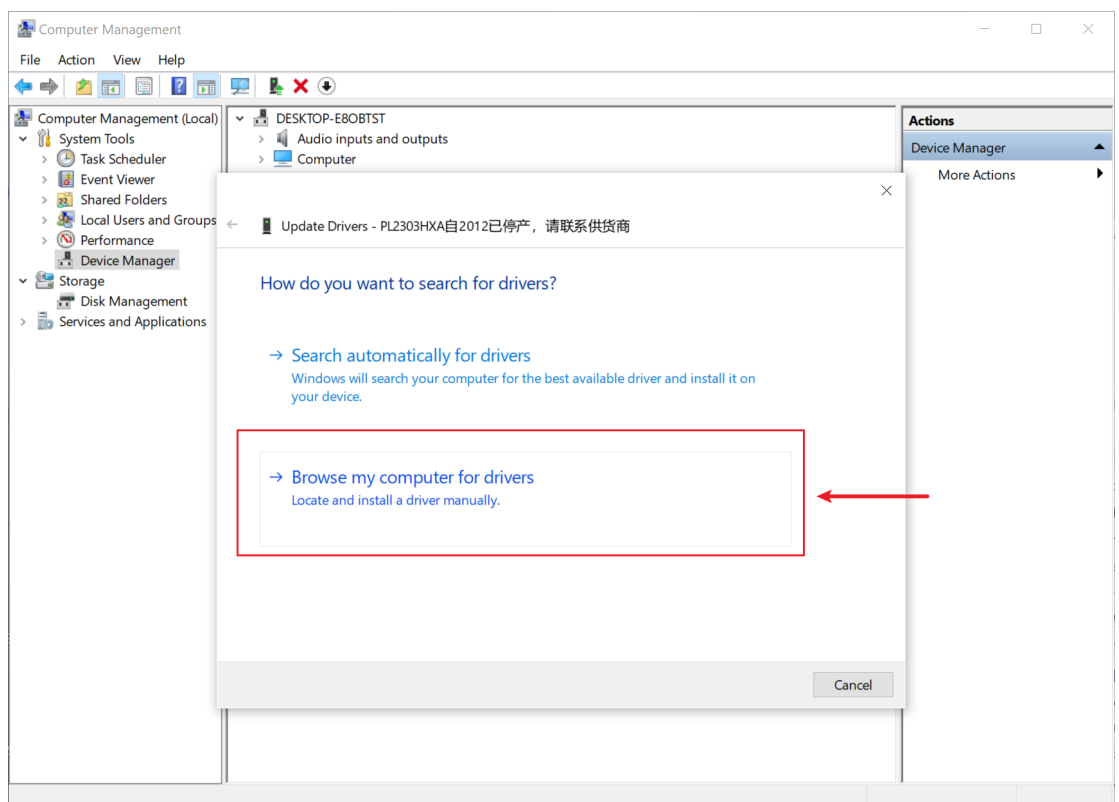
- b) Install



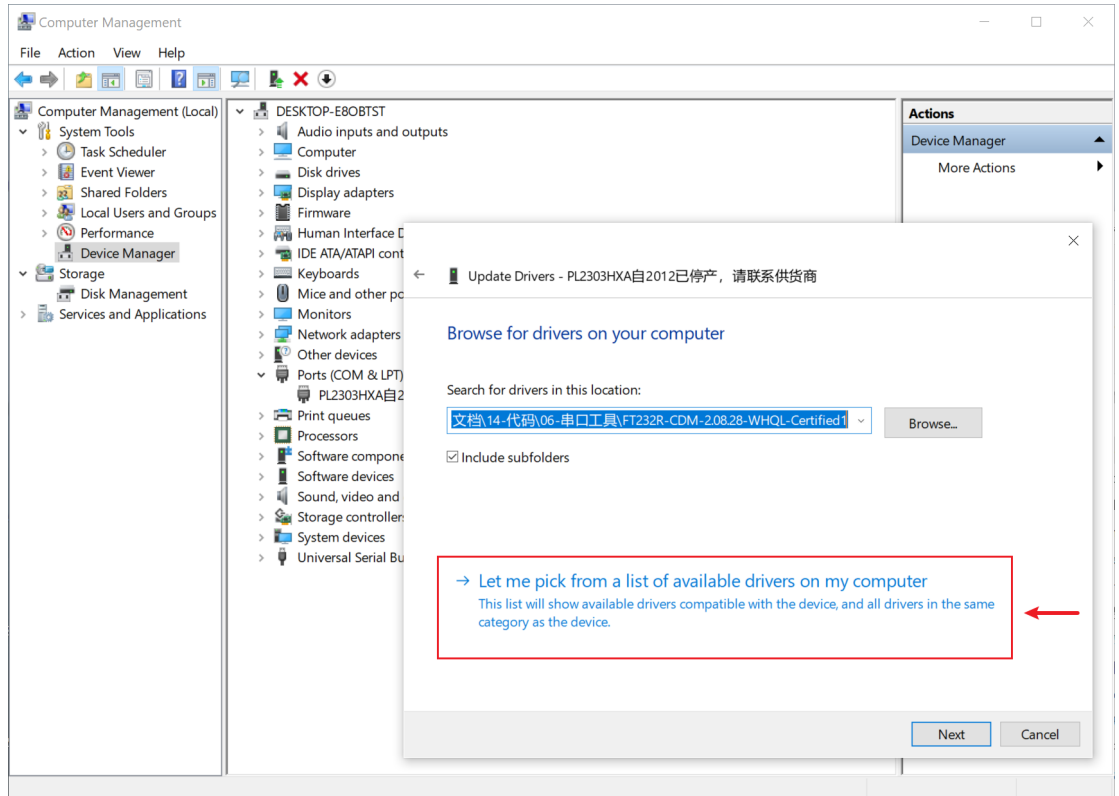
- c) Update driver



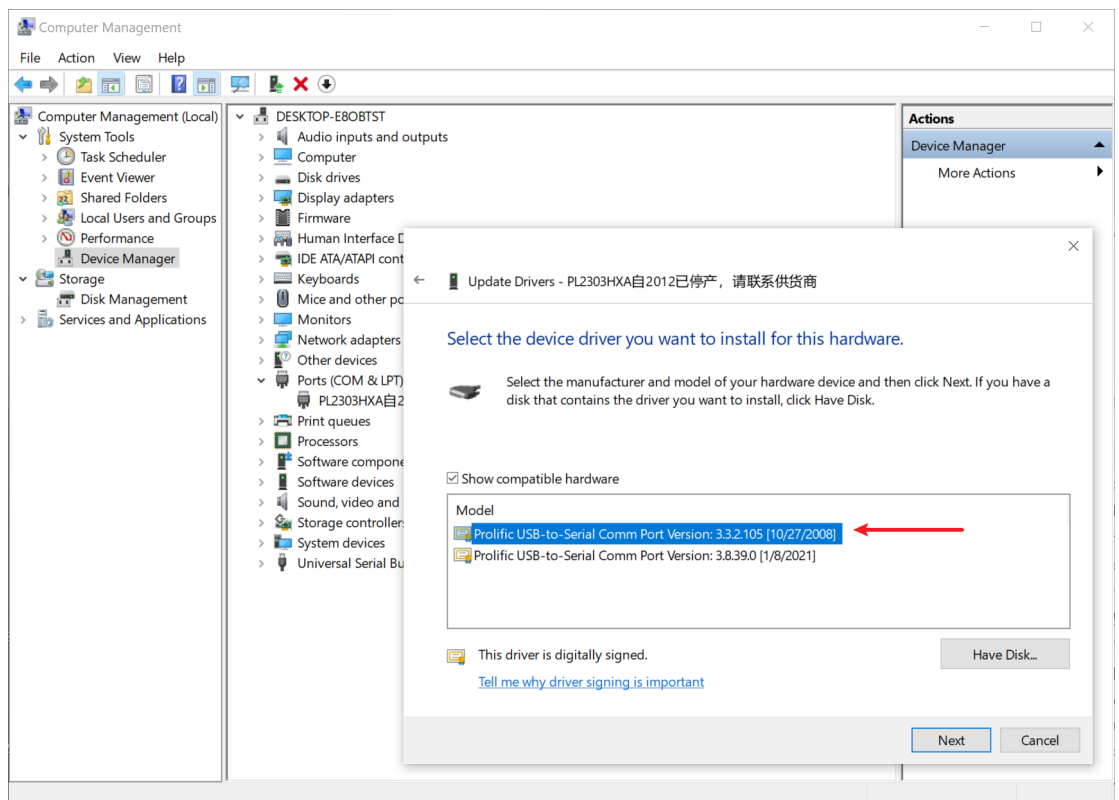
d) Browse my computer for drivers:

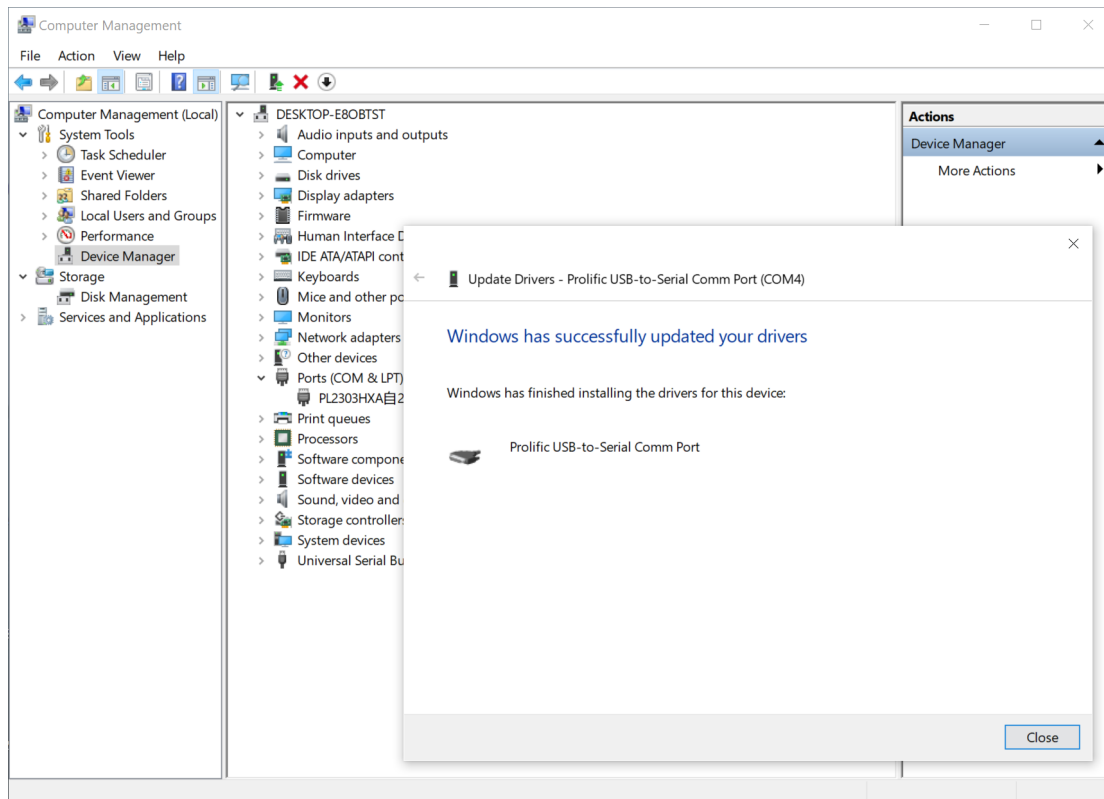


e) Let me pick from a list of available drivers on my computer:



f) Select the 3.3.2.105 [10/27/2008] version:





3. It's ok.

