



Take this flyer
with you!

reCamera

Your shortest pathway to build a
market-ready AI camera



reCamera



reCamera
HQ PoE



reCamera
Gimbal



Customizable

Multiple Sensor Options

Switch between:

Night Vision

Global Shutter

Thermal Imaging



NPU
1-4 TOPS

Interchangeable
Modular
Design



Custom
Model
Supported



Open Source

Enhanced Heat
Dissipation

RISC-V & Linux
Open CV C++

Fast Deployment

Low-code with
Built-in Node-RED



YOLO 11n

Includes

Pre-installed Ultralytics YOLO11



Pocket - cube
Size

40x40x36.5 mm Magnetic
and 1/4" Thread Mount



Native Support **SenseCraft**

Ethernet

BT4.2/5.0

Wi-Fi 2.4 GHz / 5 GHz

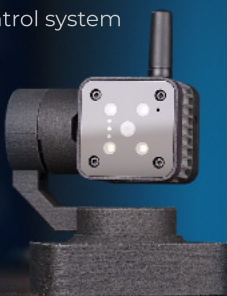
Beyond Vision

Mic and
Speaker



reCamera Gimbal

An open-source control system
for reCamera



Full Range
Motion

Dual brushless motors, 360°
yaw and 180° pitch viewing
coverage.



AI Enabled

Pre-installed YOLO11, simplifying
the building of applications.
Supports custom models for more
flexibility.



Low-code
Development

Built-in Node-RED dashboard
for low-code customization of
gimbal actions.



Plug & Play

Comes with a
user-friendly console for
easy setup and control.



reCamera HQ PoE

Equipped with an advanced CMOS sensor for sharper, clearer images. It has an M12 lens mount—flexible to replace the default lens with any compatible 2MP M12 lens. Also supports PoE.



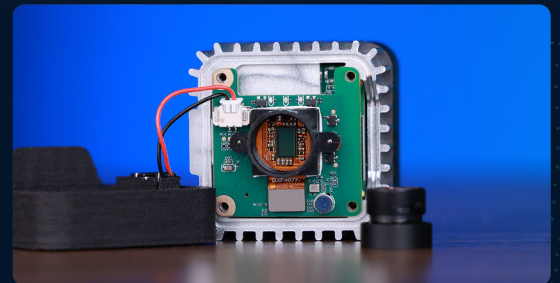
NEW

Features



High Quality

Equipped with a 1/2.9-inch GC2053 CMOS sensor, providing superior image quality.



M12 Lens Mount

Default 90° FOV, easily replaceable with any standard M12 lens.



Ethernet with PoE

Supports data and power over a single cable, PoE Mode A only.



IO/UART Extension

6-pin header with 1×UART and 3×GPIO.

Applications



Gesture Control



Target Tracking



Custom Workflow

Like Auto-scan at 9:00 AM, record on target detection

