

Technical Specification Sheet - M12 Ultra Telephoto Lens for reCamera 2002

1. Product Identification and Overview

Product Name:

M12 Ultra Telephoto Lens for reCamera 2002 - 2MP, 15°

SKU: 100070335

General Description:

This is a 2-megapixel (2MP) ultra-telephoto lens featuring a 22mm focal length. The lens is designed for 1/2" image formats and provides a narrow field of view for long-range or detail-oriented imaging applications.

Component Visual:

The unit is a compact, black-finished conical lens assembly with an aluminum alloy barrel and M12 × 0.5P thread.



2. Optical Specifications

The following table details the core optical performance parameters for the 100070335.

Optical Performance Parameters

Parameter	Specification
Focal Length	22mm
Aperture (D/f')	F1:3.5
Resolution	2MP
Image Circle	1/2"
Lens Structure	Aluminum alloy + 3G
Back Focal Length (BFL)	5.5mm

3. Field of View (FOV) Matrix

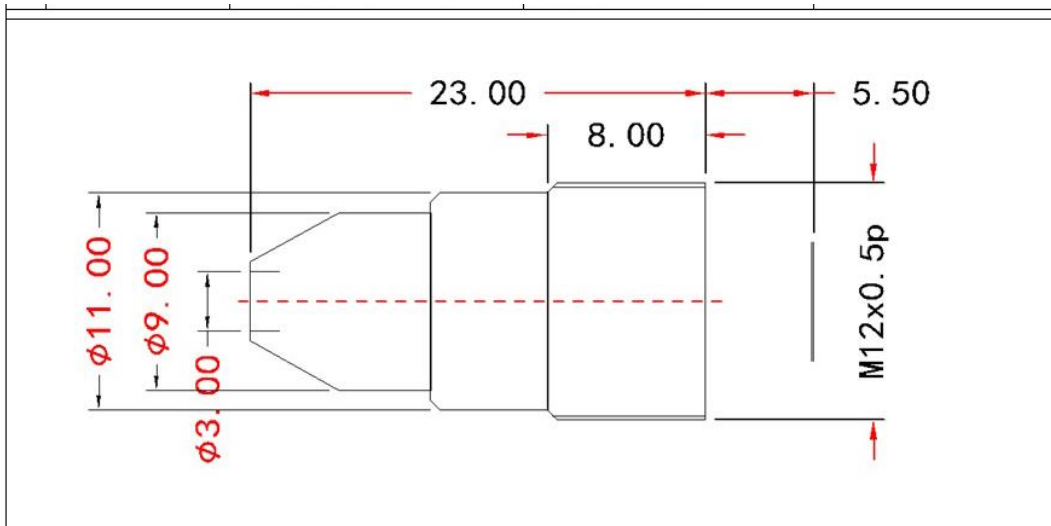
The source specification provides horizontal and vertical field angles only. The reCamera 2002 value is based on the GC2053 active area and a 22mm low-distortion lens model.

Sensor Format	Diagonal (D)	Horizontal (H)	Vertical (V)
1/2" Sensor	/	14.5°	10.92°

4. Mechanical and Physical Specifications

Mechanical Properties

- Mount: M12 × 0.5P
- Weight: 4.5g
- Minimum Object Distance (M.O.D.): 0.3m
- Dimensions: Φ12mm × 20.0mm (large-aperture A type); Φ12mm × 23.0mm (small-aperture B type); Φ12mm × 30.0mm (conical 5C type)
- Mechanical Material: Aluminum Alloy



5. Operation and Environmental Limits

Operation Modes

- Iris: Fixed
-

6. Regulatory Compliance

Fully compliant with RoHS (HSF) standards for hazardous substance restriction.