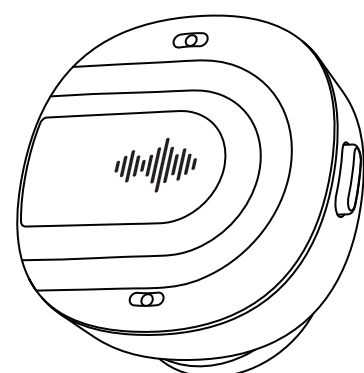


616mm

88 mm

seed studio



reSpeaker Clip

Open Wearable AI Recorder

User Manual

Version 1.0

About reSpeaker Clip

reSpeaker Clip is a compact, wearable AI voice recording and analysis device designed specifically with developers in mind. It supports 360° omnidirectional sound pickup up to 3 meters and can record independently without a smartphone. To deliver an exceptional developer experience, reSpeaker Clip provides open-source, out-of-the-box firmware and a demo App, alongside comprehensive SDKs. Whether you are building voice transcription tools, AI summarization services, or custom voice AI applications for retail and meetings, reSpeaker Clip serves as the ultimate open hardware platform for rapid prototyping and deployment.

Key Features

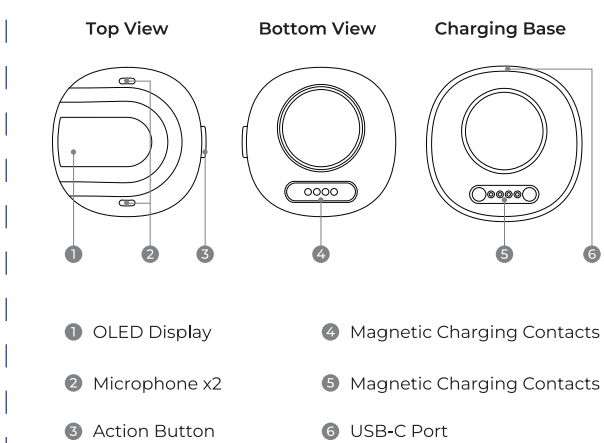
- **360° Omnidirectional Pickup**
Built-in dual PDM microphones supporting 3-meter pickup, delivering high-quality, noise-reduced single-channel audio for clear voice recognition.
- **Independent Recording & Quick Start**
Built-in 2GB storage can store up to 250+ hours of compressed audio (Opus mono, 32kbps), allowing one-click fast recording without waiting for a smartphone connection.
- **Clear Status Indication & Control**
Integrates a 0.5-inch OLED display, a vibration motor, and a physical action button, providing users with intuitive and non-intrusive feedback on device status.
- **Extended Battery Life**
Engineered for low power consumption, enabling 14-18 hours of continuous recording and on-device noise processing per charge.

- **Versatile Wearability**
Supports multiple wearing styles including magnetic attachment, lapel clip, and lanyard/necklace.
- **Exceptional Developer Experience (Out-of-the-Box)**
Comes with fully open-source firmware and a ready-to-use demo App. Developers can start testing, recording, and analyzing audio immediately upon unboxing, eliminating the need to build from scratch.

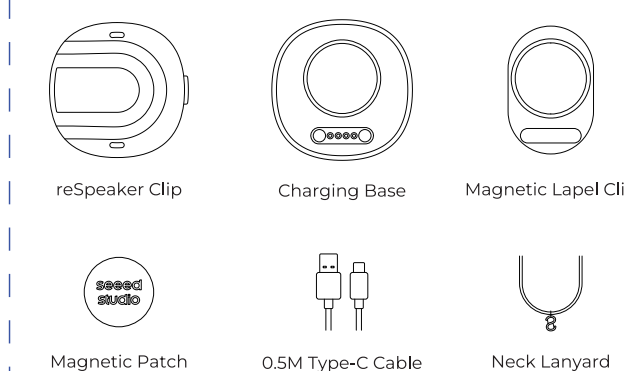
Specifications

Specification	Details
Main Control	nRF5340+nRF7002
Display	0.5-inch 88°48 OLED
Microphone	Dual PDM, up to 16Khz sampling rate
Audio Output	Noise-reduced audio
Connectivity	Bluetooth (BLE 5.3), Wi-Fi (for high-speed audio export)
Internal Storage	2GB (Stores approx. 250+ hours of compressed audio)
Battery Life	14-18 hours of continuous recording
Interaction	Action button, Vibration motor
Charging Interface	4-pin Magnetic

Hardware Overview

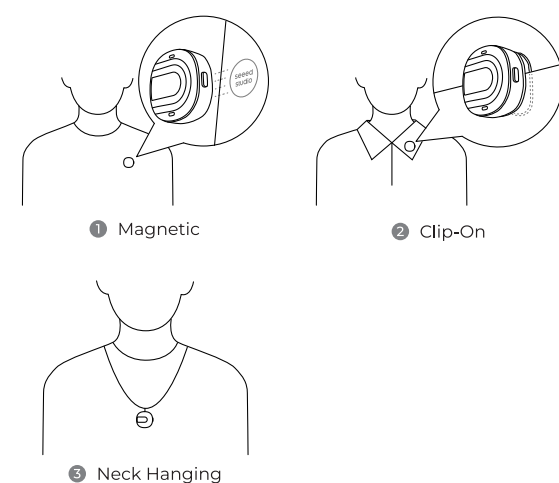


What's In The Box



88 mm

Wearing Methods

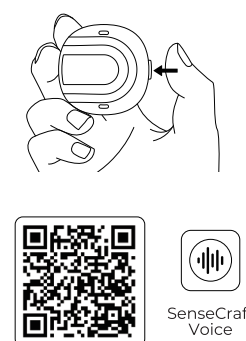


Quick Start

The product includes fully open-source firmware and a ready-to-use demo application. Developers can immediately start audio testing, recording and analysis right out of the box, without the need to build the basic framework from scratch.

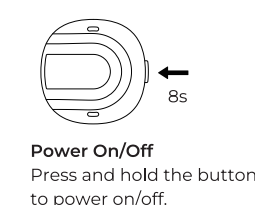
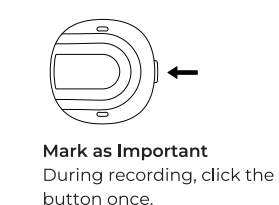
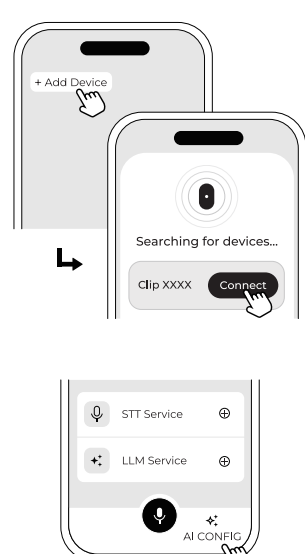
Step 1
Press and hold the action button to power on the device.

Step 2
Scan the QR code above to download the SenseCraft Voice App.



Step 3
Open the SenseCraft Voice App, tap the icon in the top left corner, and follow the on-screen instructions to connect and bind your device.

Step 4
Tap the icon in the bottom right corner to configure the STT & LLM AI settings, then save.



Warranty Terms and Conditions

- This product is covered by a 1-year limited quality guarantee.
- Warranty coverage is limited to products purchased from the official Seed Studio website or authorized distributors. Customers need to keep receipts and purchase vouchers.
- To apply for warranty service, please provide the purchased invoice and the device's serial number, and keep relevant documents safe.



Warning

- Do not expose to water or moisture.
- Do not bundle or use power cables in coiled state; keep them fully extended to avoid overheating.
- Do not connect to non-standard power systems (e.g., unregulated DC sources).
- Suggest to use the recommended power adapter.
- In areas with unstable voltage, unplug the device when not in use.
- Do not block ventilation slots to prevent overheating.
- Do not use in extreme temperatures (-20°C to 60°C).
- Avoid direct sunlight and corrosive environments.
- If liquid enters the device, disconnect power immediately and contact support.
- Unauthorized repairs or modifications void warranty.

Support

Tech support email:
If you encounter any issues while deploying or testing, please don't hesitate to contact our technical support team at techsupport@seedstudio.com, or refer to our online knowledge base, <https://wiki.seedstudio.com>.

Customized service email:
For further information about customizations, welcome you to directly reach out at edg@seed.cc, we will provide prompt reply.

Discord community:
Welcome to join our official community, where you can exchange product-related questions and get relevant support. <https://discord.seed.cc>

裁切线

折叠线